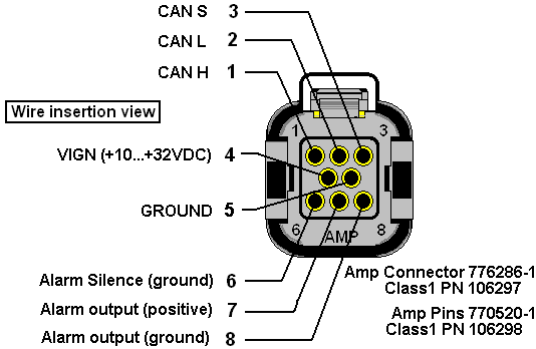


Class 1

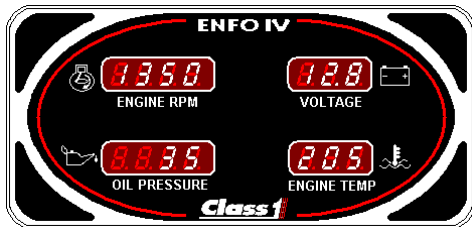
ENFO IV Display (PN 108661) Quick Manual

WIRING

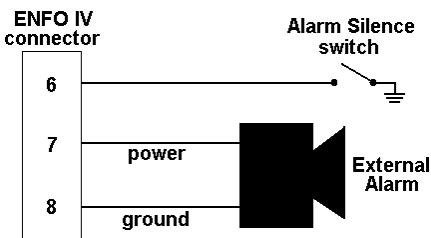


OPERATION

The ENFO IV will display **Engine RPM**, **Engine Oil Pressure**, and **Engine Coolant Temperature** when the associated CAN message is received or the corresponding display will show dashes if its messages are not being received. **Voltage** will always be displayed. The external alarm will activate when Oil pressure is 10 PSI or less, Engine temperature is 250° F or higher, or voltage is 11.9V or less on a 12V system (23.8V or less with 24V system – the ENFO IV uses automatic voltage detection to determine the low voltage point). During a low voltage or low oil pressure condition the corresponding display will alternate between the current value and "LO". During a high temperature condition the Engine Temp display will alternate between the temperature and "HI".



EXTERNAL ALARM and SILENCE SWITCH



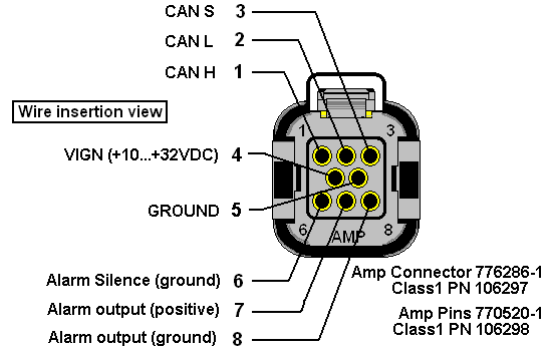
The ENFO IV can supply a maximum of 250 mA to an external alarm. The silence switch will silence the alarm for 5 minutes.

For a detailed operation manual visit
www.Class1.com

Class 1

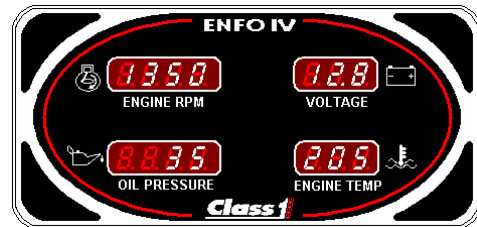
ENFO IV Display (PN 108661) Quick Manual

WIRING

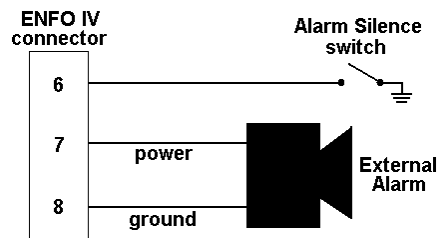


OPERATION

The ENFO IV will display **Engine RPM**, **Engine Oil Pressure**, and **Engine Coolant Temperature** when the associated CAN message is received or the corresponding display will show dashes if its messages are not being received. **Voltage** will always be displayed. The external alarm will activate when Oil pressure is 10 PSI or less, Engine temperature is 250° F or higher, or voltage is 11.9V or less on a 12V system (23.8V or less with 24V system – the ENFO IV uses automatic voltage detection to determine the low voltage point). During a low voltage or low oil pressure condition the corresponding display will alternate between the current value and "LO". During a high temperature condition the Engine Temp display will alternate between the temperature and "HI".



EXTERNAL ALARM and SILENCE SWITCH



The ENFO IV can supply a maximum of 250 mA to an external alarm. The silence switch will silence the alarm for 5 minutes.

For a detailed operation manual visit
www.Class1.com